

DS Component V9.0 Release Notes

DS Component V9.0 Release

한국어

2020. 06. 01

Version: 9.0

DS Component V9.0 Release Notes

DS Component V9.0

DS Component V9.0이 출시 되었습니다. 기존 DS Component V8.0의 업그레이드 버전으로 새로운 Component 가 추가 되었습니다. 자세한 사항은 다음 항목을 참고해 주십시오.

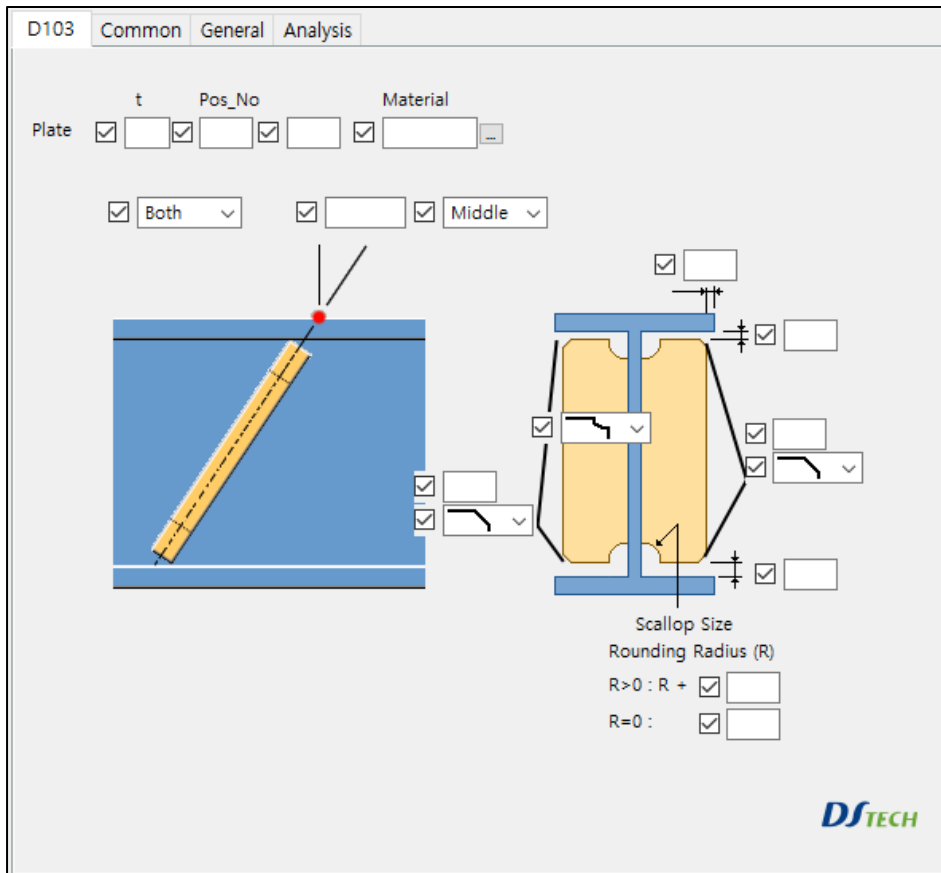
새로운 기능

DS Component V9.0에 추가된 새로운 컴포넌트는 다음과 같습니다.

→ D103, D104, D105

D103 Component

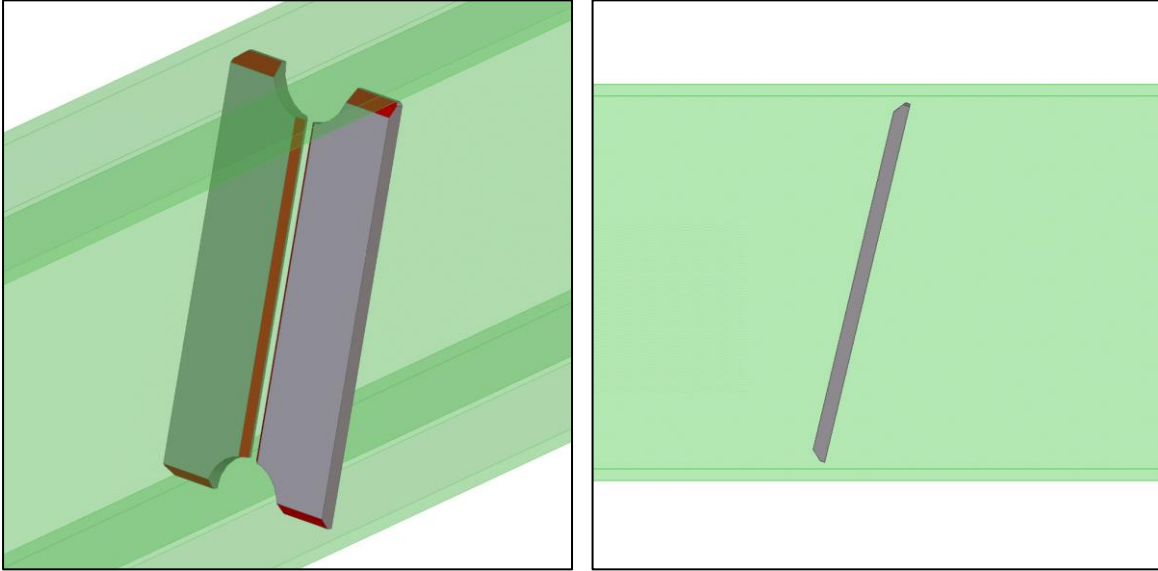
Create Rib Plate



D103 컴포넌트는 Rib Plate 생성 시 경사 생성이 가능하고 Rib Plate 와 Beam 사이의 3면 개별

DS Component V9.0 Release Notes

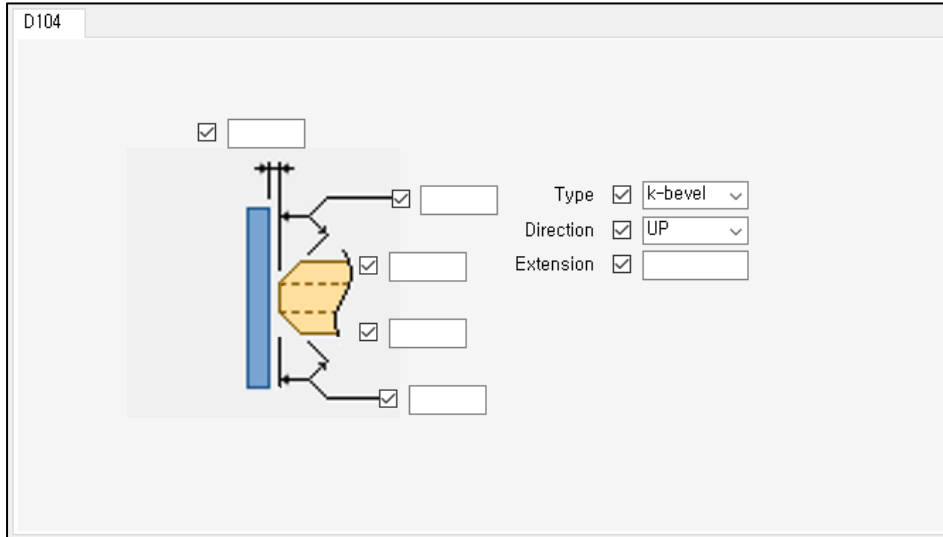
개선이 가능 합니다.



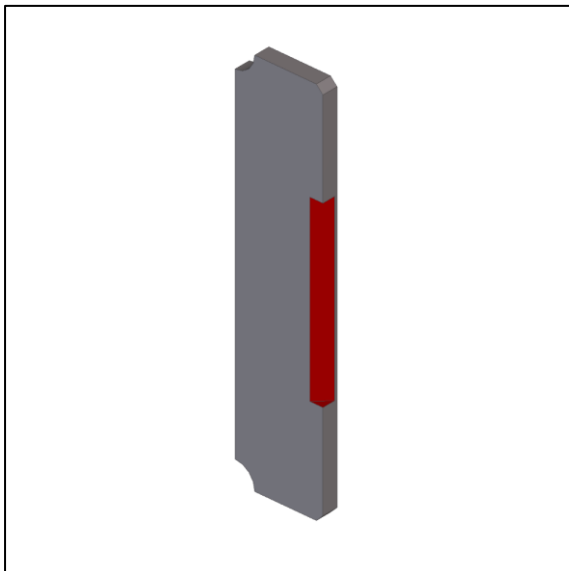
DS Component V9.0 Release Notes

D104 Component

Contour Plate Bebel Specific Section



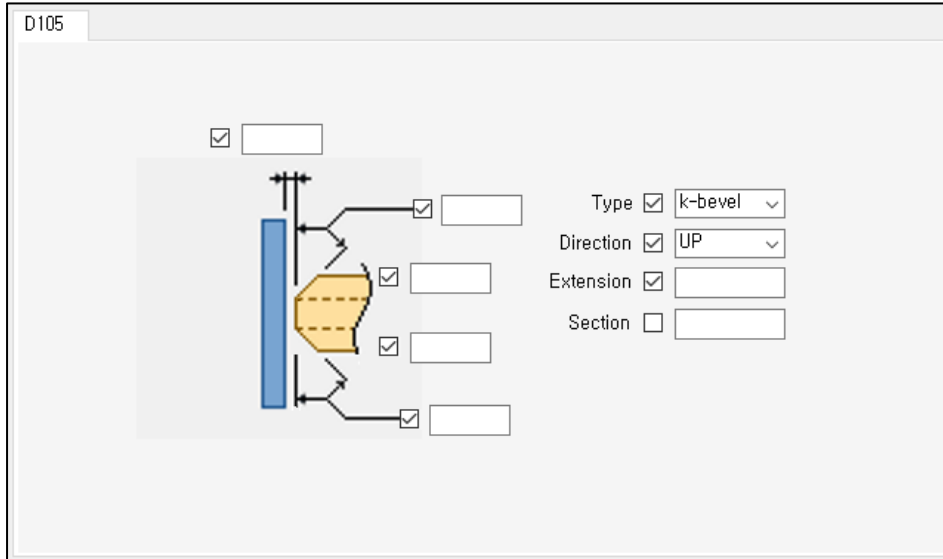
생성된 Contour Plate 에서 Point to Point 사이 사용자가 지정하는 특정 구간에 개선이 가능합니다.



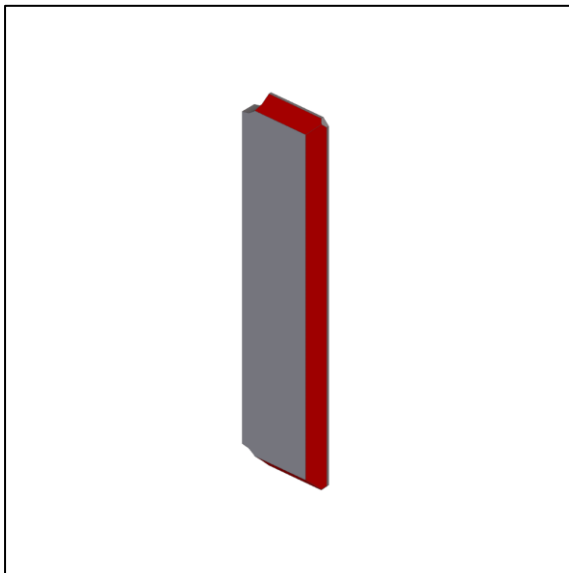
DS Component V9.0 Release Notes

D105 Component

Contour Plate Bebel Point to Point



생성된 Contour Plate 에서 사용자가 지정한 Point to Point에 모든 개선이 가능합니다.



DS Component V9.0 Release Notes

기타 수정사항

DS Component V9.0에 추가된 새로운 기능은 다음과 같습니다.

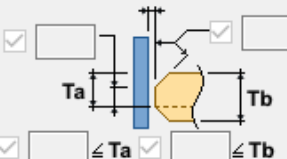
J722, J751, J752 Column Rib Plate 개선 및 Flat Bar 옵션 추가



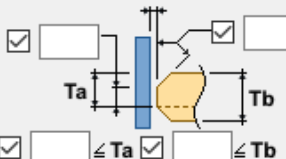
DS Component V9.0 Release Notes

J751 Weld Common General Analysis

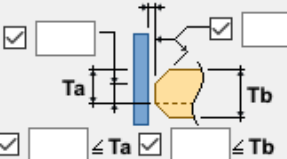
Flange


 ≤ Ta ≤ Tb

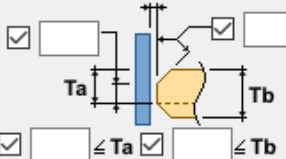
Gouset Plate


 ≤ Ta ≤ Tb

Col Flg Rib Plate


 ≤ Ta ≤ Tb

Col Web Rib Plate


 ≤ Ta ≤ Tb

Up Outside on

Dn Outside on

Flat Bar Op

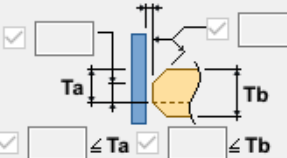
Up Outside on

Dn Outside on

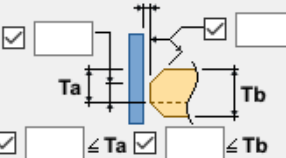
Flat Bar Op

J752 Weld Common General Analysis

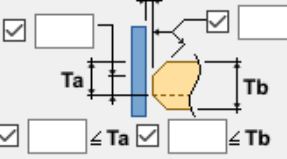
Flange


 ≤ Ta ≤ Tb

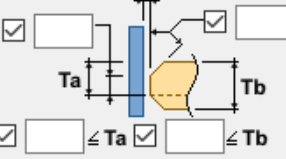
Gouset Plate


 ≤ Ta ≤ Tb

Col Flg Rib Plate


 ≤ Ta ≤ Tb

Col Web Rib Plate


 ≤ Ta ≤ Tb

Up Outside on

Dn Outside on

Flat Bar Op

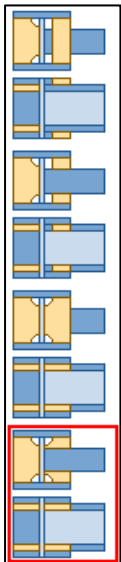
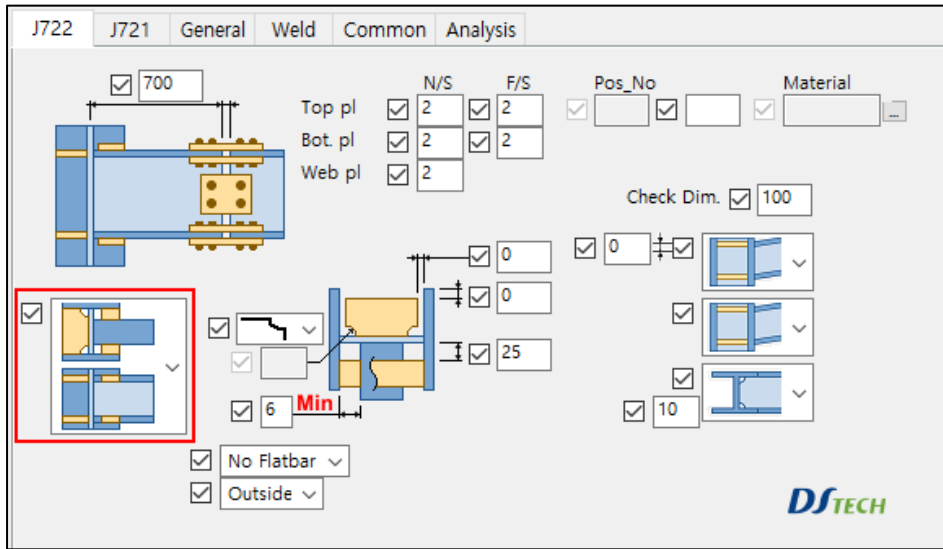
Up Outside on

Dn Outside on

Flat Bar Op

DS Component V9.0 Release Notes

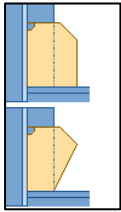
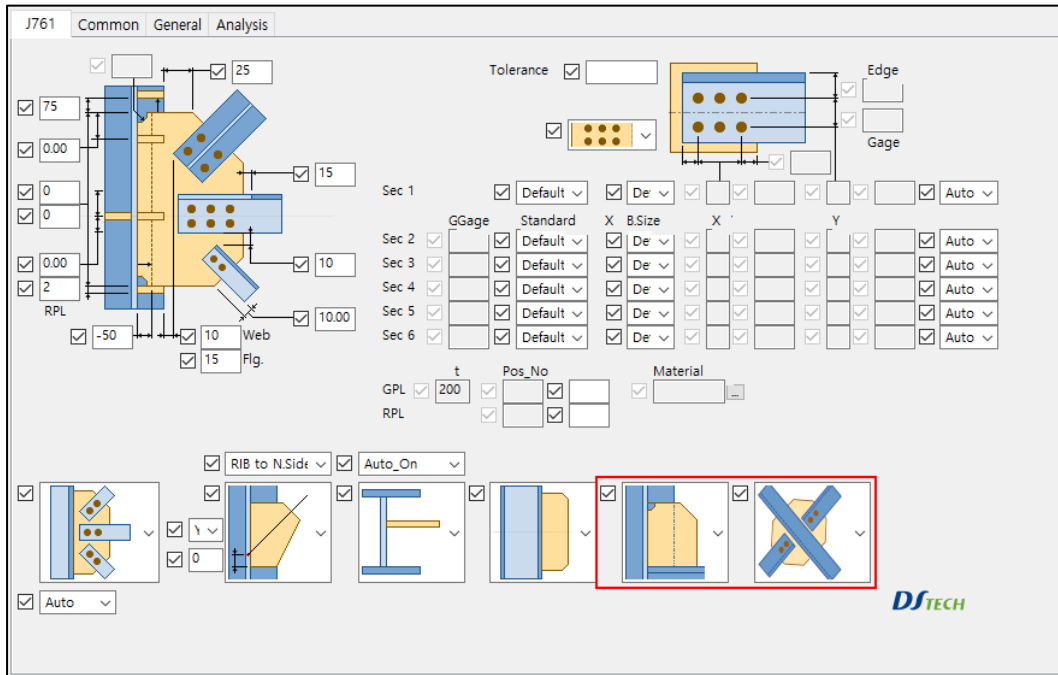
J722 Stiffener Scallop Type 모양 추가



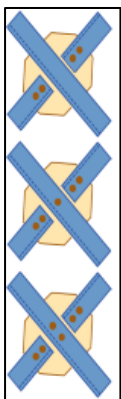
J722 Stiffener Scallop Type 모양 추가

DS Component V9.0 Release Notes

J761 Column Gusset Plate, X-brace Type Option 추가



J761 Column쪽 Gusset Plate 모양 Option 추가



X brace Type에서 Main 부재의 Bolt 기능 Option 추가.

DS Component V9.0 Release Notes

J772 Type 기능 추가

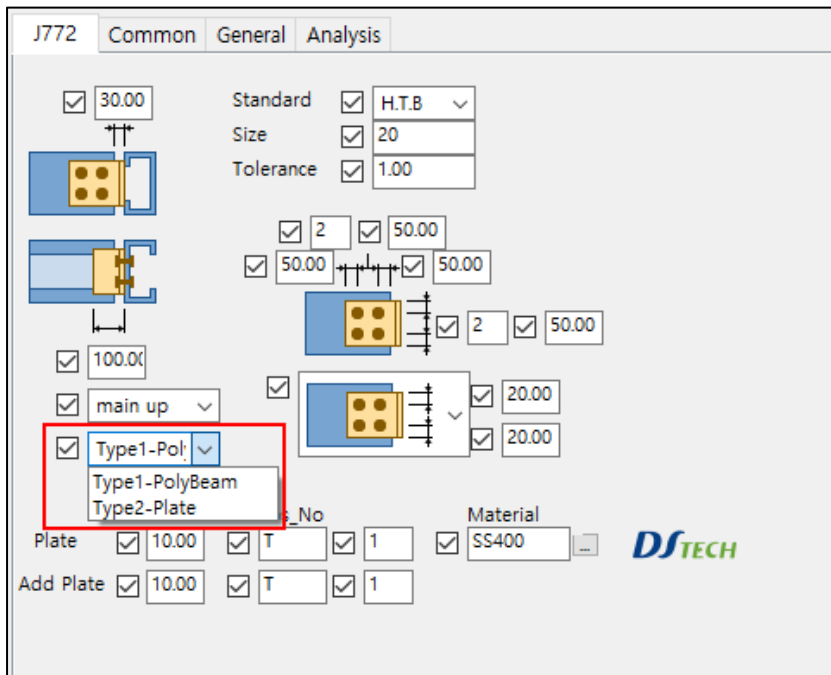
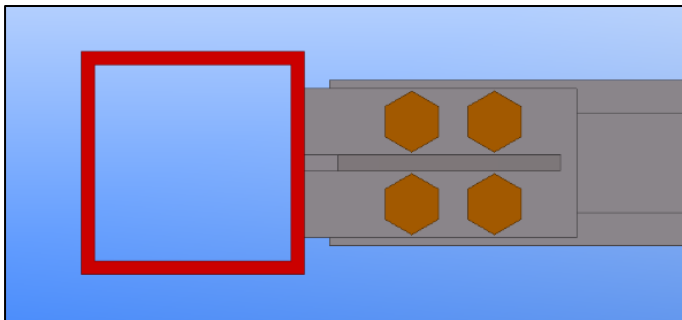
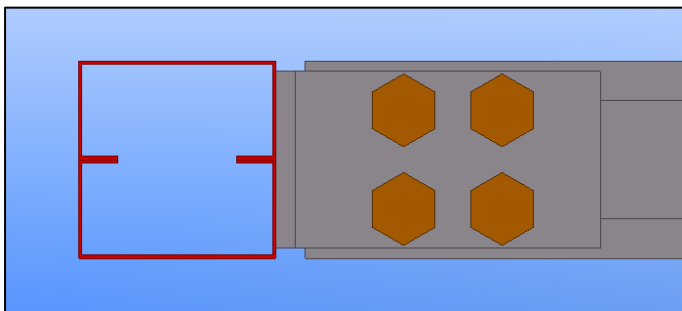


Plate Type Option 추가 → Type1 – PolyBeam / Type2 - Plate

Main Beam의 Column 형태가 Box형 Beam인 것도 접합 가능하도록 추가(4면 가능)

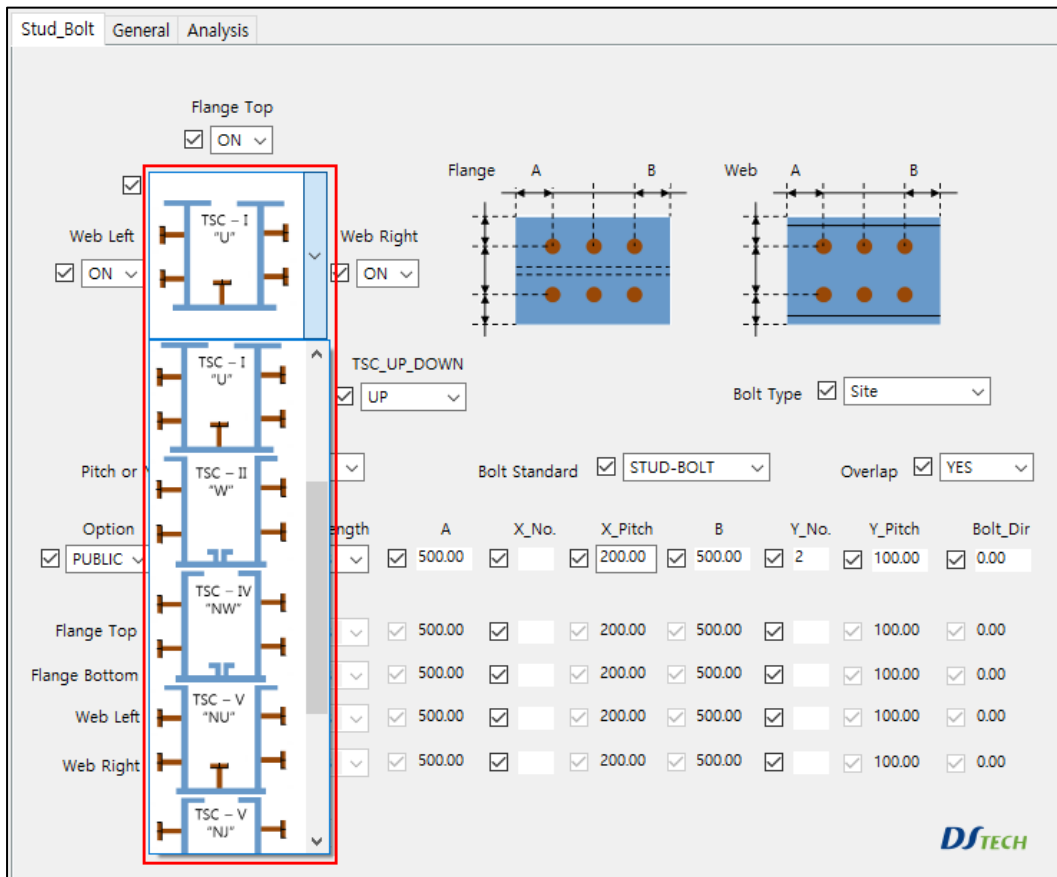


Main Beam의 Column 형태가 C Beam 두개를 합쳐 만든 것도 접합 가능하도록 추가(4면 가능)



DS Component V9.0 Release Notes

D101 TSC Beam Type 추가



기존 한가지 TSC 보에서 Type 별로 5가지 TSC보 추가

