

# Company Profile

**DSTECH** will  
never stop challenging for the future.

We are recognized as  
**the specialized technology and experts.**

We realize the happiness for customers  
**by challenge and passion.**



**DSTECH Co., Ltd.**

---

3D DESIGN & ENGINEERING

## Overview

- Overview
- History

## Organization

- Organization Chart
- Careers

## Business area

- Business area

## Major Accomplished Projects

- Projects
- Projects | Analysis & Design
- Projects | Basic & Detail design
- Projects | Shop detailing

## Etc.

- Facilities Information
- Certification
- DSTECH Partners
- Location



---

Company name	DSTECH Co., Ltd.
CEO	Park, Chun Duk
Establishment	July, 9, 2007
Registration number	506-81-61538
Telephone	+82-54-272-7433
FAX	+82-54-272-7435
Address	Head Office : 72, Yeonil-ro 145beon-gil, Yeonil-eup, Nam-gu, Pohang-si, Gyeongsangbuk-do, Korea.  Seoul Office : 707. 65, Digital-ro 9-gil, Geumcheon-gu, Seoul, Korea.  China Office (Yantai) : No.1 Fengshan Road, Zhifu District, Yantai, Shangdong, China
Homepage	<a href="http://dstecheng.co.kr/">http://dstecheng.co.kr/</a>
Business area	Analysis & Design  Basic & Detail design  Building Information Modeling  Shop detailing  Project management  Research & Development

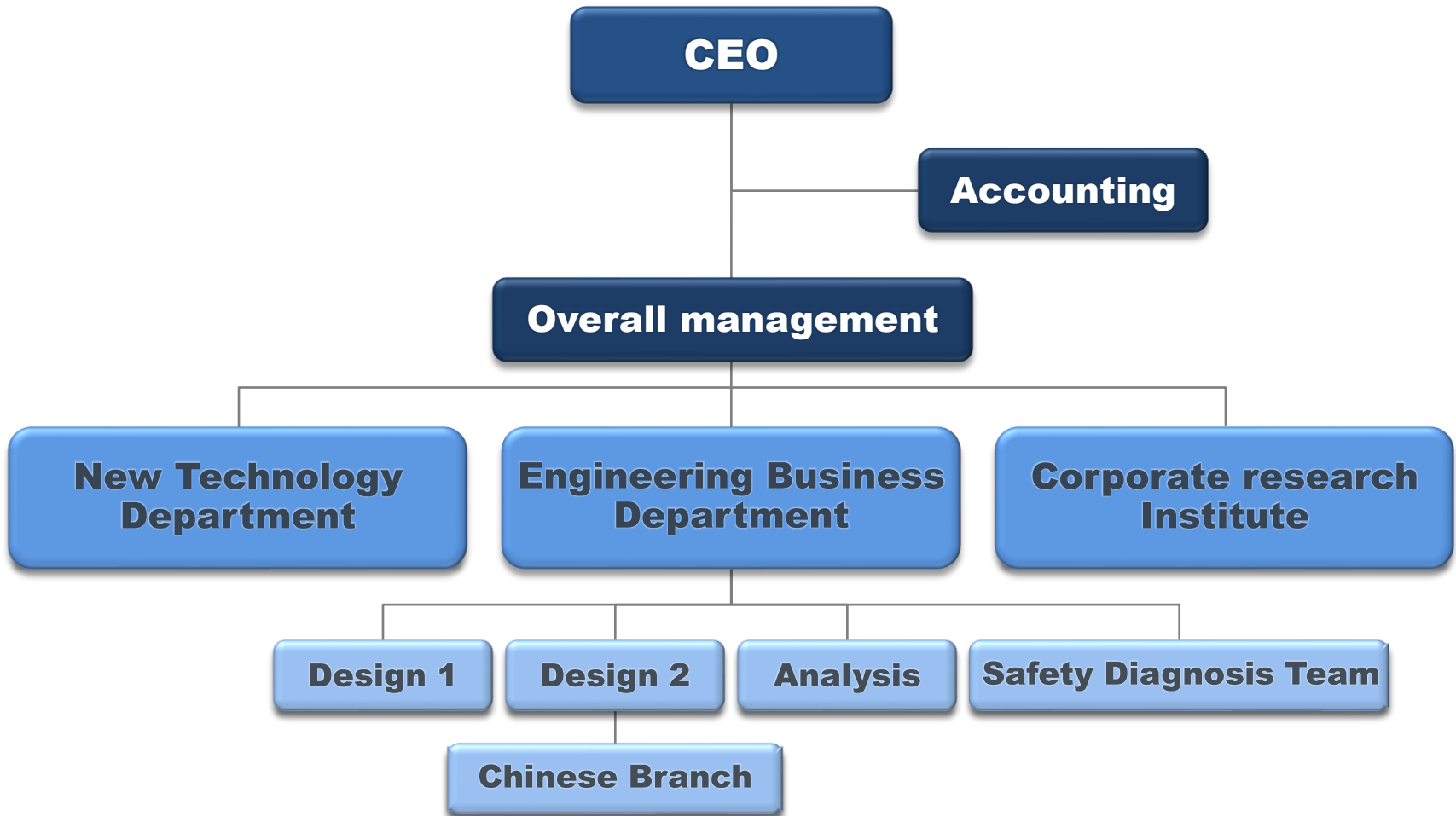
<b>2007</b>	7		Establish DSTECH Co., Ltd.
	8		Register Samsung Engineering Partner
<b>2009</b>	5		Register POSCO E&C Partner
<b>2010</b>	6		Register SK E&C Partner
	9	1	Establish Seoul Branch
<b>2011</b>	2	1	Relocate office – Dongmun-ro, Yeonil-eup, Nam-gu, Pohang-si
<b>2012</b>	1		Register POSCO Plantec Partner
	5		Develop Automative program of connection : DS Component
	5		Establish China Branch
	8		Register Hyundai Architects & Engineers Associates Partner
	10		Register POSCO Engineering Partner
<b>2013</b>	2		Register certificate of patent (automative program of connection : DS Component)
<b>2014</b>	1	1	Establishment of corporate Research & Development center
	3		Register Hyundai Heavy Industries Partner (Offshore & Engineering division)
	8		Register POSCO Partner
	9		Register Samsung C&T Partner
	11	1	Acquire Main-Biz certification
<b>2015</b>	7	1	Headquarters moved into the new building
<b>2016</b>	6		Register POSCO A&C Partner
<b>2017</b>	6	26	Pohang Promising Small Giants Certificate
	7	6	ISO9001 Certificate

<b>2018</b>	4	24	Register Safety Diagnosis Institution
	11	26	Register Venture Company(R&D Company)
<b>2019</b>	2	26	Award of appreciation plaque for Pohang Promising Small Giants CEO
	3	27	Register a supplier of Smart Factory
	9	25	Register construction technology service industry
<b>2020</b>	3		Register Smart Sensor Program Copyright
			Patent Application : Earthquake Monitoring System
	4		Register certificate of Building Modular Construction
	5	1	Selection of Ministry of Small giants of Ministry of Employment and Labor
	9	4	Report an affiliated architect of Engineering Business Operator
<b>2021</b>	3	18	Register Building Management Inspection Agency in Gyeongsangbuk-do
		5	Register Pohang City Construction Corporation (Architecture Field) Safety Inspection Agency
	4		Register certificate of earthquake detection device
	5	31	Register Smart Sensor Response Time Measurement Program Copyright Selection of the organizing company of Technology Development of the Ministry of Public Administration and Security project
<b>2022</b>	4	1	Selection of Small and Medium Enterprises
		26	Selection of Small and Medium Venture Business Department Smart Manufacturing Innovation Technology Development Support Project
	5		Certification of excellent technology credit rating companies (T3 grade)
	7	1	Establish DSTECH Pohang Factory (Sodong-ri, Cheonghae-myeon)
	22		Permission for power generation projects (Pohang-si)

Position	Name	Field of work	Year	Qualifications
President	CD, Park	Architecture	27	Top class engineer
Vice President	SI, Choi	Steel structure	30	Skilled engineer
Vice President	SY, Kim	Steel structure	38	Top class engineer
Director	YS, Yoon	Architecture, BIM	22	Top class engineer, PMP
Director	SM, Kang	Steel structure	22	Top class engineer
Director	CS, KIM	Analysis	17	Top class engineer
Director	MG, Park	Architecture	40	Top class engineer
Director	HK, Choi	IT	19	Skilled engineer
Director	HS, Yoon	Architecture, BIM	20	Skilled engineer
General Manager	KH, Kim	Steel structure	29	Skilled engineer
General Manager	HN, Kim	설계(기계/철골)	17	Skilled engineer
General Manager	YM, Kim	Architecture	14	Skilled engineer
General Manager	SH, Kim	Analysis	12	Skilled engineer
Deputy Director	SH, Kim	Steel structure	12	Skilled engineer

Position	Name	Field of work	Year	Qualifications
Deputy Director	SG, Kim	Architecture	11	Skilled engineer
Manager	JG, Cheon	Account	8	
Manager	YH, Choi	Steel structure	15	Skilled engineer
Manager	SM, Jeon	Architecture, BIM	11	Skilled engineer
Manager	YJ, Choi	Architecture	10	Skilled engineer
Manager	AR, Lee	IT	8	Skilled engineer
Manager	JH, Kim	Steel structure	8	Skilled engineer
Engineer	SY, Choi	Steel structure	2	Unskilled engineer
Engineer	HE, Nam	IT	2	Unskilled engineer
Engineer	HH, Je	Analysis	2	Unskilled engineer
Engineer	JY, Ha	Steel structure	2	Unskilled engineer
Engineer	DW, Kim	Architecture, BIM	1	Unskilled engineer
Engineer	JE, Choi	IT	1	Unskilled engineer
Engineer	DG, Han	Architecture, BIM	1	Unskilled engineer
Manager	EY, Jang	Account	7	

# Organization Chart



## Work Competency

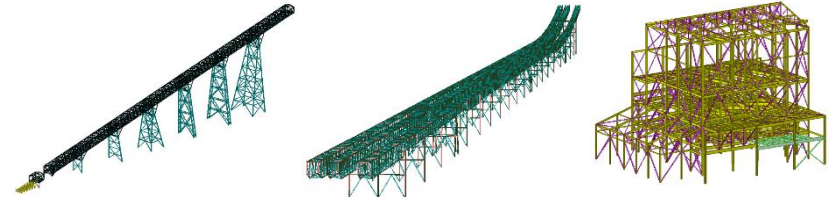
- **STRUCTURAL ENGINEERING**
  - General construction and apartment houses : Structural plan and Structural design
  - Domestic and International Plant : Structural design
  - V.E Design : Reduction of cost and maintenance cost, Securing structural safety
- **POWER PLANT ENGINEERING**
  - Boiler STRUCTURE / Raw material transfer facility / Raw material storage facility
- **ENVIRONMENT PLANT ENGINEERING**
  - Dust collection facility / Desulfurization equipment / Denitrification equipment / Common band
- **STEEL MAKING PLANT ENGINEERING**
  - Coaling facility / sintering facility / chemical conversion facility / steel making facility / rolling facility

## Performance Project

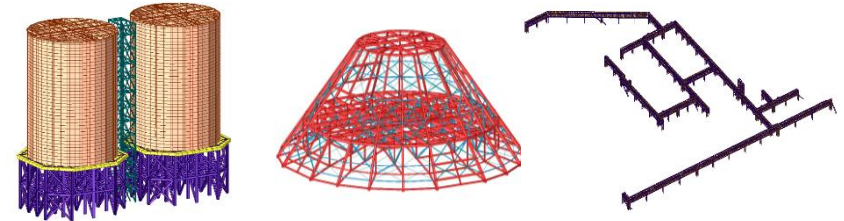
Project	Purpose	Client
Indonesia KALSEL 1	Power Plant-Raw material transfer facility	Hyundai Engineering
Indonesia KALSELTENG 2	Power Plant-Raw material transfer facility	Hyundai Engineering
Vietnam ZOCV Project	Industry-Common band	POSCO E&C
Brazil CSP Project	Steel Plant-Raw material transfer facility	POSCO E&C
POSCO Pohang #2-#4 Sinter SCR Structure	Steel Plant-Denitrification equipment	POSCO E&C
Algeria OUMACHE CCPP	Industry-Gas transport facility	Hyundai Engineering
Goseong Thermal Power Electric Precipitator	Power Plant-Dust collection facility	Hallasanup
Samcheok Thermal Power Raw material treatment facility	Power Plant-Raw material treatment facility	Doosan Heavy Industries

## Major Performance

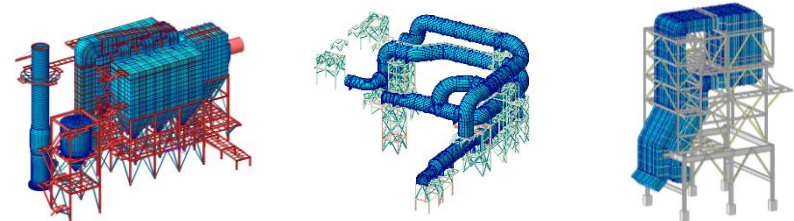
Power generation plant – Raw material transfer facility



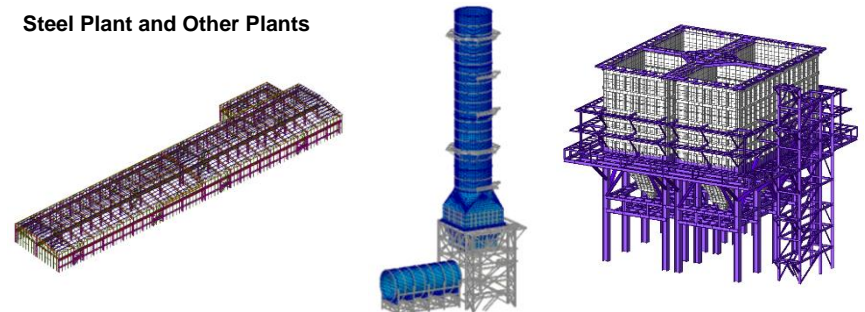
Power generation plant – Raw material storage facility and Common band



Environmental Plant – Dust collection facility and Denitrification equipment



Steel Plant and Other Plants

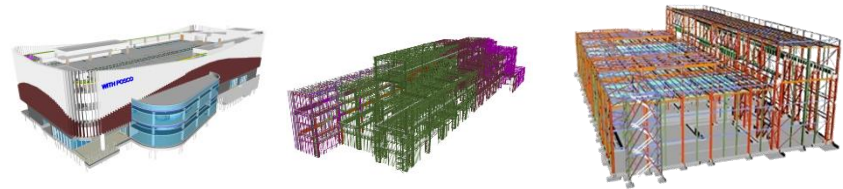


## Work Competency

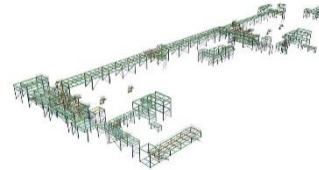
- BIM design and standardization establishment and management
- Basic design for various domestic and foreign plant constructions and detail design
- Old plant rationalization design
- Bid design and integration design
- Plant-related building permits
- Modular, Mobile Building Design and Manufacture
- Factory roof photovoltaic business design and management

## Major Performance

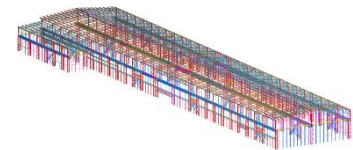
POSCO E&C



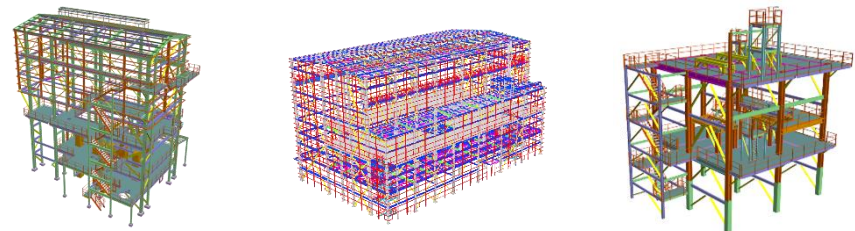
Daewoo Engineering



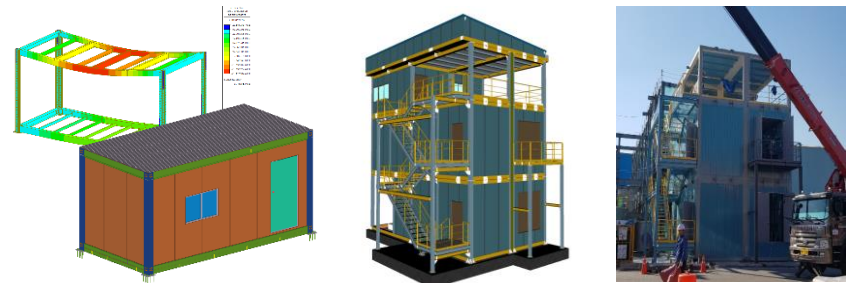
KOSCO



SK Ecoplant



Modular, Mobile Building Design and Manufacture



## Performance Project

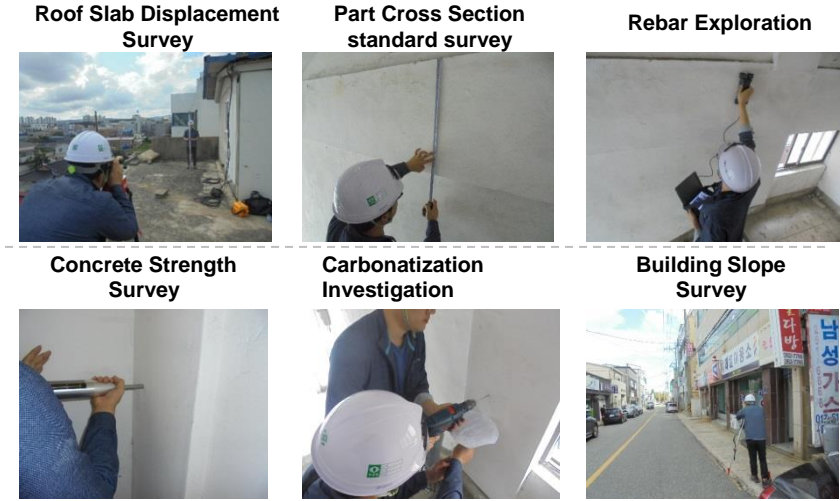
Project	Scale	Client
BIM service for large restaurant construction	-	POSCO E&C
Pohang New steelmaking plant	40,000 Ton	POSCO E&C
Gwangyang 4 Hot Rolling Mill Facility	22,000 Ton	POSCO E&C
Brazil CSP Transportation Project	36,000 Ton	POSCO E&C
Gwangyang Combined Cycle Power Plant	680 Ton	Daewoo Engineering
Chilseo Steel Mill Rolling Plant New Construction	2900 Ton	KOSCO
Set up TEKLA System	193 Ton	SK Ecoplant
AMBATOVY PROJECT	14,000 Ton	SM KEANGNAM



## Work Competency

- Safety Diagnosis Specialized Institution
- Facility safety inspection and safety diagnosis
- Developed earthquake acceleration sensor
- Tilt measurement sensor development
- Implementation of disaster safety related tasks and establishment of monitoring system
  - R&D support project tailored to local needs
  - SME Scale-up R&D Support Project
  - Development of AIoT-based 3-type collective facility safety management platform

## Safety Diagnosis and Task Execution



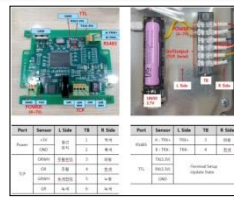
## Performance Project



Gyeongju General Welfare Center for the Disabled



JoYang Apartment



Development of acceleration and inclination sensors



The Hue Apartment



Taewoong Heights



sensor installation



## Work Competency

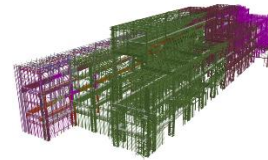
- **Steel Structure SHOP DWG.**
  - 3D CAD working organization for over 20 years
  - Annual average of 30EA or more PJT / 50,000 tons performance
  - Possessing various PJT performance at home and abroad
- **TOTAL Engineering can be performed**
  - Basic + Detail + Shop Batch design possible
- **Fast and accurate design by using design automation S/W**
- **Automatical design change history management**
- **Automatical error check and design quality control**

## Performance Project

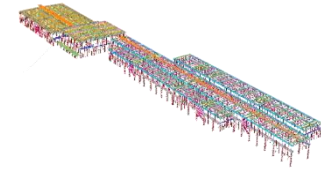
Project	Scale	Client
Pohang New steelmaking plant	40,000 Ton	POSCO E&C
Gwangyang 4 Hot Rolling Mill Facility	22,000 Ton	POSCO E&C
SK Hynix M15 Project	13,000 Ton	SK Hynix
Hwaseong Dongtan Lotte Department Store	5,900 Ton	LOTTE E&C
Pohang Hwanho Sunrise Park Architectural Sculpture	400 Ton	POSCO
CRISP PROJECT.	6,500 Ton	Exxon Mobil
AMBATOVY PROJECT	14,000 Ton	SM KEANGNAM
Paju LGD P10 Project	16,000 Ton	LG Display

## Major Performance

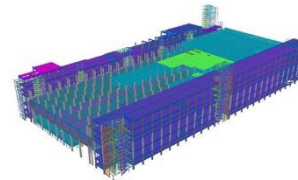
Steelmaking



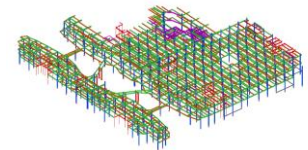
Hot Rolling Equipment



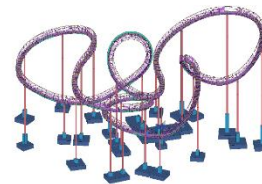
Electrical Installation



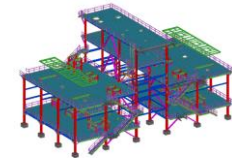
Department Store



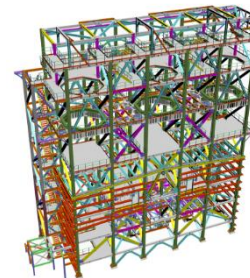
Architectural Sculpture



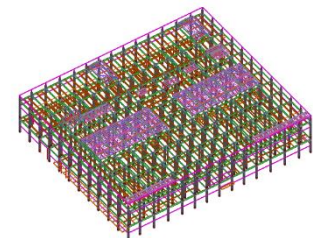
Chemical Building



Plant



Display

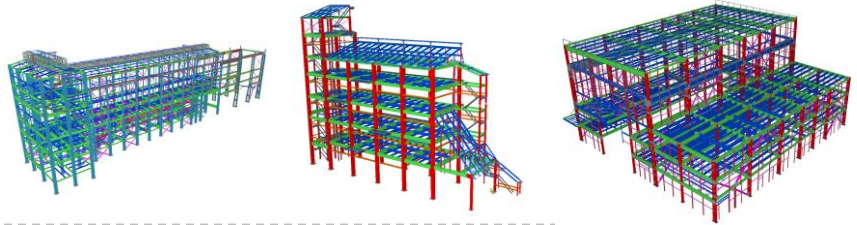


## Work Competency

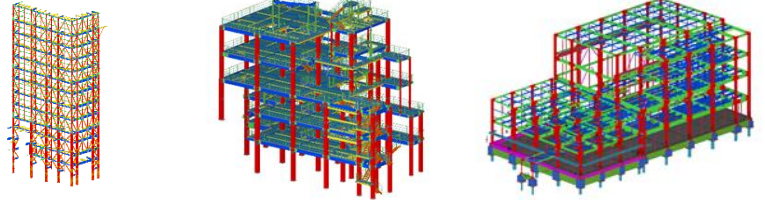
- Possessing many Japanese PJT performances
- Major companies and business areas
  - SHOP: OBAYASHI, SHIMIZU, JFE, TAKENAKA
  - Structure Collaboration : DAIKEN
  - BIM Collaboration : OBAYASHI
- Solutions using 3D CAD (Tekla Structures)
  - Solution and PJT process using 3D CAD (Tekla Structures) for 2D-based design in Japan

## Major Performance

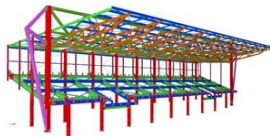
JFE



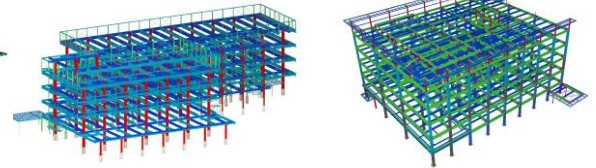
DAIKEN



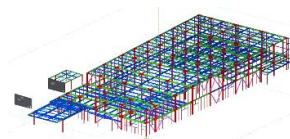
TAKENAKA



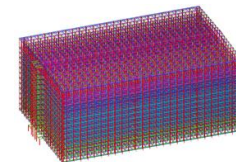
OBAYASHI



NAKAMURA



SUNTORY



SANKEN



## Performance Project

Project	Contents	Client
Fukuyama JFE 3 sintering plant building	BD	JFE
MHPS Thermal Power Plant	BD	JFE
Hirohata Biomass	3D Model, BD	DAIKEN
Sakura Stadium	3D Model, BD, Shop	TAKENAKA
Kokubunji Hitachi Semiconductor Factory	BD	OBAYASHI
Sunstar	3D Model, BD	NAKAMURA
SunstarSUNTORY Omi Unit 81	BD	SUNTORY
Kumamoto Shelter	3D Model, BD, Shop	SANKEN

## Work Competency

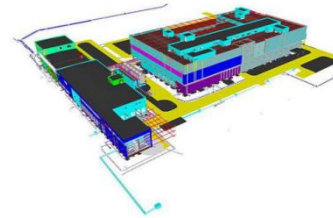
- **Build Integrated BIM**
  - PDS, S3D, TEKLA STRUCTURES, REVIT, CADWORX, Implementation of integrated BIM through solutions such as NAVISWORKS
  - Verification of implementation design data
  - Design final BIM data and extracted data consistency review
- **Smart Construction**
  - Pre-interference check (junction, adequacy of design, etc.)
  - Design review and constructability review considering the construction sequence (3D & 4D Simulation)
  - Review of design consistency using Laser 3D Scanning Data
- **BIM Procedure standardization establishment**
- **3D Integrated Design Management**
  - Integrated design management for structural, basic and detailed design

## Performance Project

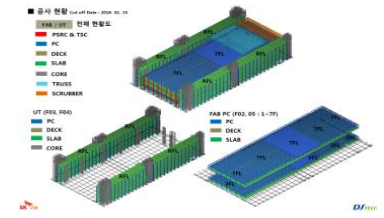
Project	Contents	Client
Nagoya 3rd Blast Furnace 5th Repair Project	BIM design	DAIKEN
YHHI Sanpedro & Cuyo Project	BIM design	YHHI
Gwangyang 3rd Blast Furnace 2nd Repair Project	BIM design	POSCO E&C
Kalselteng 2 EP Project	BIM design	Aerix
SK Hynix M15 Project	BIM design	SK Ecoplant
Edison 3 Project	BIM design	Samsung Engineering
POSCO E&C TEKLA System	Building BIM Process	POSCO E&C
SK Ecoplant TEKLA System	Building BIM Process	SK Ecoplant

## Major Performance

Edison 3 Project



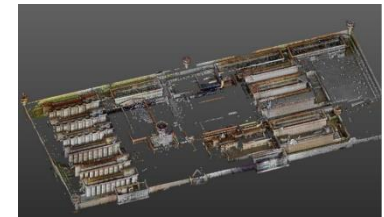
SK Hynix M15 Project



PosLX Modular Installation



Gyeongbuk First Prison -Scanning Project



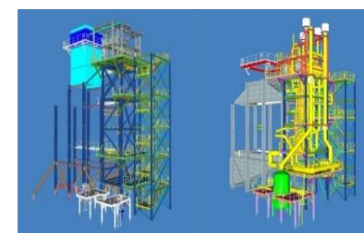
POSCO E&C TEKLA System



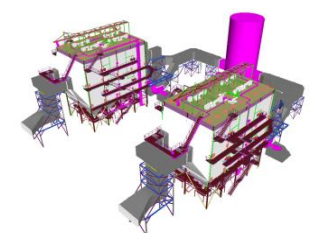
Establishment of Daehan Steel RC BIM standard



YHHI Sanpedro & Cuyo Project



Kalselteng 2 EP Project



## Main Function

- Web-based steel fabrication management program
- Project management and task settings
- Real-time information sharing
- Interlock with Trimble Connect
- Revision management
- Mobile-based job performance input
- Assembly Drawing Link
- Basic information management



Dash Board



Project Report



Real-time process auto Viewer

## Major Performance



JEIL TECHNOS CO.,LTD



ENT



CWSNC



DSHI



HOSUNGSTEEL



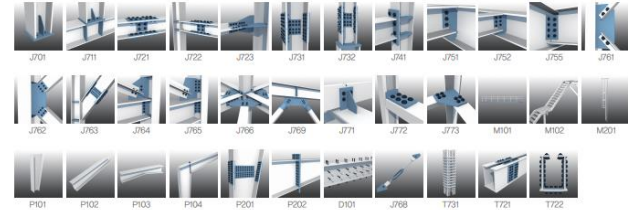
DAEDOHI

## Work Competency

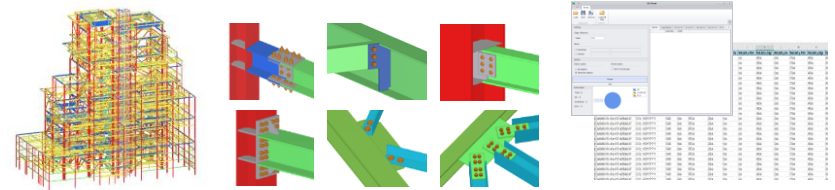
- **DS Solution Package**
  - Design Automation (DS Component)
  - Quality Assurance (Digital Check)
  - Design change history management (Revision Management)
- **MEP Unified Model Management**
  - Structure & MEP Integrated management (SCEM)
- **BIM-based design automation system construction**
  - Customer-specific design standardization and automation SW development
  - Smart Factory linked SW development (process visualization, MES, PLM)

## Main Software

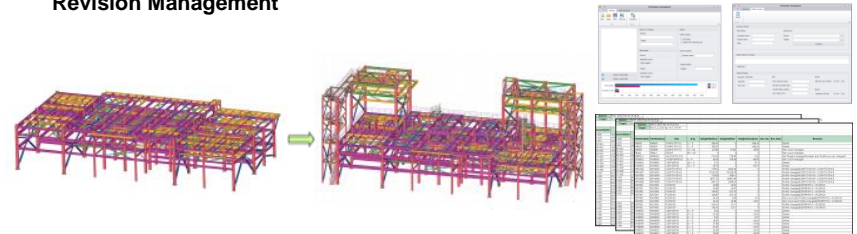
### DS Component



### Digital Check

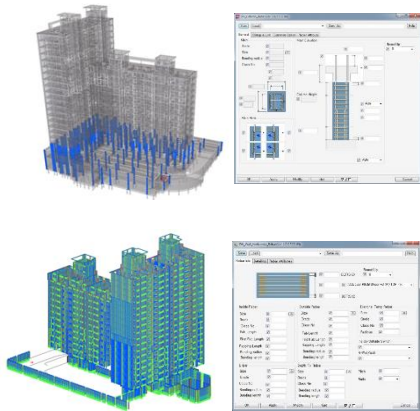


### Revision Management



## Performance Project

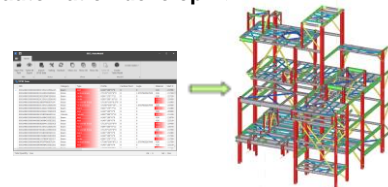
### Daehan Steel RC development



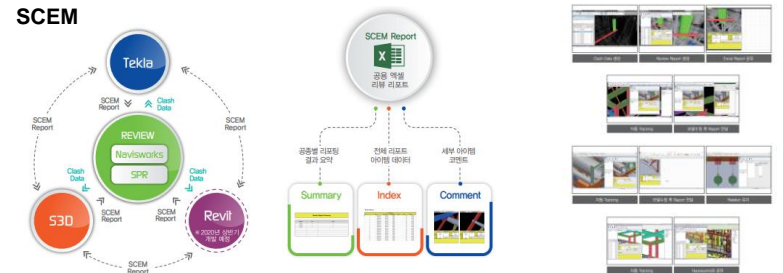
### SK TEKLA System Construction



### Samsung Engineering Modeling automation development



### SCEM



	Customer	DS Solution(Copies)			Note
		DS Component	DS Revision	DS Digital Check	
D O M E S T I C	SAMSUNG ENGINEERING	11	-	-	Design automation development in progress
	SAMSUNG C&T	2	-	-	own engineering design
	POSCO E&C	1	-	-	Design standardization and automation linkage
	DL E&C	3	-	-	Application of Steel frame quantity calculation
	Jooyoung ENG	300	-	-	
	Daisung CP ENG	3	-	-	
	Other SHOP Company	18	-	-	
	Steel Frame Manufacture	3	6	6	Production management system (PLM) linkage
	Dongmyung University	15	-	-	Agreement with BIM Construction Business Group
<b>Subtotal</b>		<b>356</b>	<b>6</b>	<b>6</b>	
O V E R S E A S	OBAYASHI(Japan)	-	-	1	Japan's 5 largest construction companies
	DAIKEN(Japan)	1	-	-	
	Yamaguchi Manufacturing(Japan)	1	-	-	
	Shō Gen(Japan)	1	1	1	
	TAS Software(China)	10	-	-	
	Ilsan Steel Ltd(China)	1	-	-	
	Cheongdo Fuzhou(China)	1	-	-	
TGTP(Malaysia)	2	-	-		
<b>Subtotal</b>		<b>17</b>	<b>1</b>	<b>2</b>	
<b>Sum</b>		<b>373</b>	<b>7</b>	<b>8</b>	

## Application examples

### I. Quantity calculation for quotation

- Application solution
  - DS Component
- DL E&C
  - Create skeletal automation modeling
  - DL E&C system linkage
  - Quotation team delivery

### II. Design automation

- Application solution
  - DS Component
- SAMSUNG ENGINEERING
  - B/D → Shop → Production linkage
  - Leverage SP3D design data
  - Interlocking production management system and Shop number

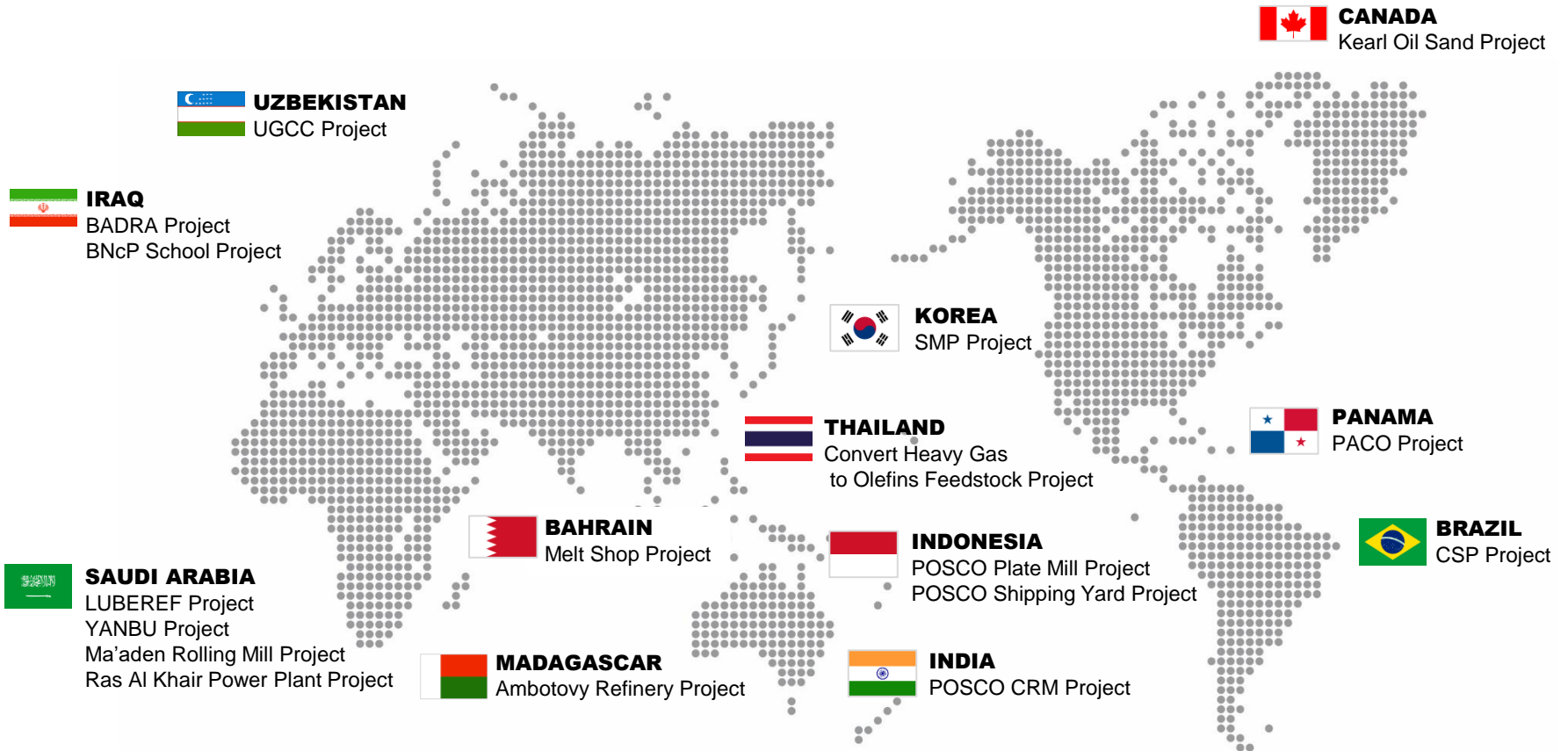
### III. Design review

- Application solution
  - DS Digital Check
- OBAYSAHI
  - Model-Based Automated Review
  - Review Results Checklist Utilization
  - Real-time model modification

### IV. Change history management

- Application solution
  - DS Revision
- CWSNC
  - Data-driven change history management
  - PLM system linkage

# Major Accomplished Projects



**353**  
Projects  
**Total**

**145**  
Projects  
**Overseas project**

**208**  
Projects  
**Domestic project**



# Client & Partner

## Major domestic construction companies and engineering companies



## Overseas construction companies and engineering companies




## Government offices and techno parks



# Facilities Information

Category	Specifications	Quantity
SOFTWARE	Tekla Structures	19
	Autodesk Building Design Suite	2
	AutoCAD 2006	2
	AutoCAD 2010	4
	CADian 2010	15
	MIDAS Gen	2
	BeST.PRO	2
	SIDD SOFT	2
	DESCON Win & Brace	2
	Steel Hub	1
	Windows Server 2008, CAL	1
	MS Office XP Small Business	8
	MS Office 2010	21
	Hangeul 2005	3
	Nexsoft Nexel	1
	Visual studio 2010 Professional	1
	Kaspersky Anti Virus (incl. Server)	22
	Adobe Premiere Pro CS6	1

Category	Specifications	Quantity
HARDWARE	Personal Computer	72
	Notebook Computer	8
	LCD Monitor	122
	Fax	2
	Digital Camera	2
	Beam Projector	2
PRINTER	FUJI XEROX ApeosPort-V C3373	2
	Sindoh Ricoh N600	1
PLOTTER	HP Color DesignJet 500(A0-Size)	1
	FX DocuWide 2050 LaserJet(A1-Size)	1




경상북도 - 엔지니어링사업자소속건축사 - 제17호

## 엔지니어링사업자 소속 건축사 신고확인증

상호 또는 명칭	(주)디에스텍			
소재지	경상북도 포항시 남구 연일읍 연일로 145번길 72			
신고인 (건축사)	성명	박문규	생년월일	1956년 05월 17일
			자격번호	제 5729호

위 건축사는 「엔지니어링산업 진흥법」 제21조 제1항에 따라 신고한 엔지니어링사업자에 소속된 건축사로서 「건축사법 시행규칙」 제16조 제1항에 따라 신고를 하였음을 확인합니다.

2020년 9월 4일

경 상 북 도 지 사 

제 2022-04935-1 호

## 건축사 자격 등록증

성 명 : 박문규


생년월일 : 1956년 05월 17일


등록번호 : 14441 ( 자격번호 : 5729 , 자격취득일 : 1993.12.07 )

유효기간 : 2017.01.19~2022.01.18, 2022.01.19~2027.01.18

위 사람은 「건축사법」 제18조 및 같은 법 시행령 제20조에 따라 건축사자격을 등록하였음을 증명합니다.

2022년 02월 10일

대한건축사협회 회장 



제 경북-119 호 

## 안전진단전문기관 등록증

상 호 : (주)디에스텍  
대 표 자 : 박 천 덕  
사무소소재지 : 경상북도 포항시 남구 연일읍 연일로 145번길 72  
분 아 : 건 축  
등록연월일 : 2018년 04월 24

「시설물의 안전 및 유지관리에 관한 특별법」  
제28조에 따라 안전진단 전문기관으로 등록 합니다

2018 년 04 월 24 일

경 상 북 도 지 사 



제 20180402842 호

## 벤처기업확인서


업 체 명 : (주)디에스텍  
대 표 자 : 박천덕  
소 재 지 : 경상북도 포항시 남구 연일읍 연일로145번길 72  
확 인 유 형 : 연구개발기업  
평 가 기 관 : 중소기업진흥공단  
유 효 기 간 : 2018년11월26일 - 2020년11월25일

위 업체는 「벤처기업육성에 관한 특별조치법」 제25조의  
규정에 의하여 벤처기업임을 확인합니다.

2018 년 11 월 26 일

 SBC 중소기업진흥공단 이사장 

등록번호 : 경북-2-342호



## 건설기술용역업 등록증

상호 또는 법인명 : 주식회사 디에스텍

영업소의 소재지 : 경상북도 포항시 남구 연일읍 연일로 145번길 72

소속국가명 : 대한민국


성명(대표자) : 박찬덕      생년월일 : 1969년 11월 9일

전문분야(세부분야) : 설계·사업관리(설계등용역 일반) ※ 계획·조사·설계 포함


등록연월일 : 2019년 9월 25일

「건설기술진흥법」 제26조제1항에 따라 건설기술용역업자로 등록하였음을 증명합니다.

2019년 9월 25일



경상북도지사



고용노동부

## 강소기업 확인서

기업명 : (주)디에스텍

소재지 : 경북 포항시 남구 연일읍 연일로145번길 72

인증기간 : 2020.5.1 ~ 2021년 강소기업 선정일 전일

위 기업은 청년과 함께 성장하는 우수한 중소기업으로서 고용노동부 2020년 강소기업으로 선정합니다.

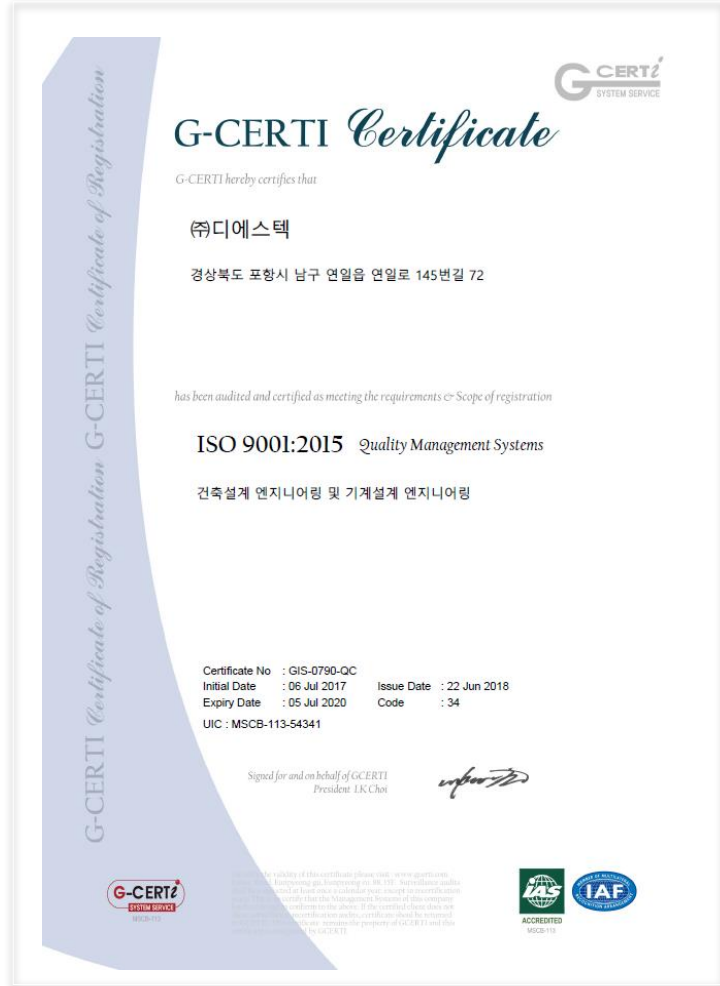
2020년 5월 1일



고용노동부장관

본 증명서는 위크릿(EPS, JPEG, GIF)을 통해 출력되었습니다.





[공서번호: vpJF-PpFG-WRzM-ytoT] [발급일자: 2014년 01월 27일]

제 2014110356 호

## 기업부설연구소 인정서

1. 연구소명: (주)디에스텍 기업부설연구소  
[소속기업명: (주)디에스텍]
2. 소재지: 경상북도 포항시 남구 연일읍 동문로 89-1
3. 신고 연월일: 2014년 1월 22일



**미래창조과학부**

「기초연구진흥 및 기술개발지원에 관한 법률」 제14조, 같은 법 시행령 제16조제1항 및 제27조제1항에 따라 위와 같이 기업부설연구소로 인정합니다.




2014년 1월 24일



한국산업기술진흥협회장

\* 한국산업기술진흥협회는 설립되었으나 "http://www.RND.or.kr"에서 "한사인증"을 입력하면 본인인증 및 유죄성을 검증할 수 있습니다.




제 R140302-02931 호

## 경영혁신형 중소기업(Main-Biz) 확인서


업 체 명 : (주)디에스텍  
대 표 자 명 : 박천덕  
주 소 : 경북 포항시 남구 연일읍 연일로145번길 72  
유효기간 : 2017.11.25 ~ 2020.11.24

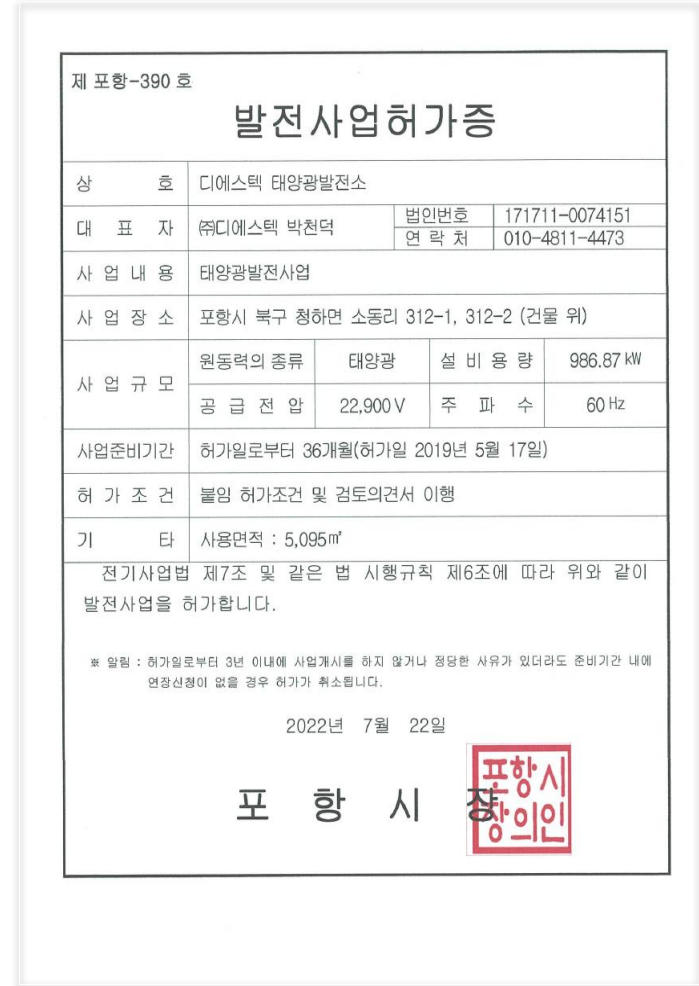
위 업체는 경영혁신형 중소기업 육성사업에 의해 선정된 경영혁신형 중소기업(Main-Biz)임을 확인합니다.



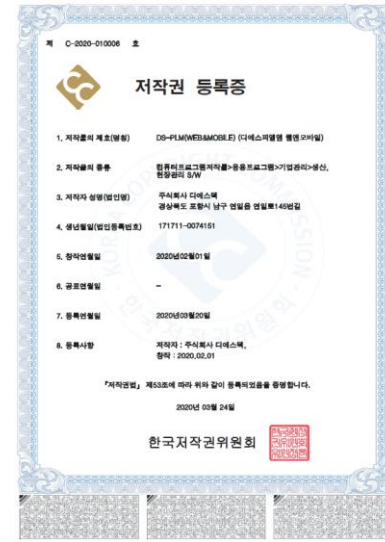
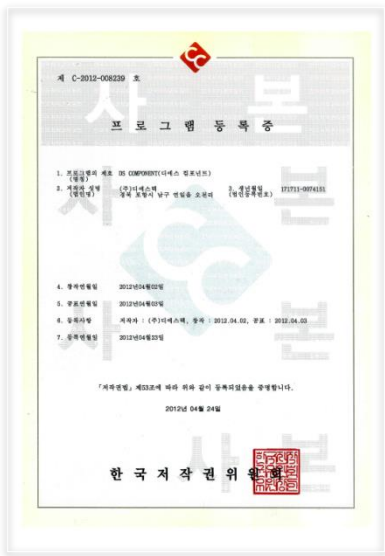
2017년 10월 27일

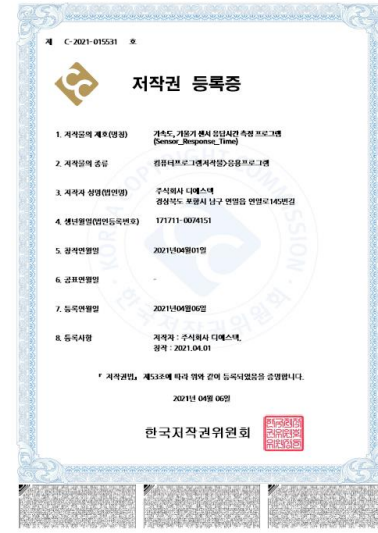
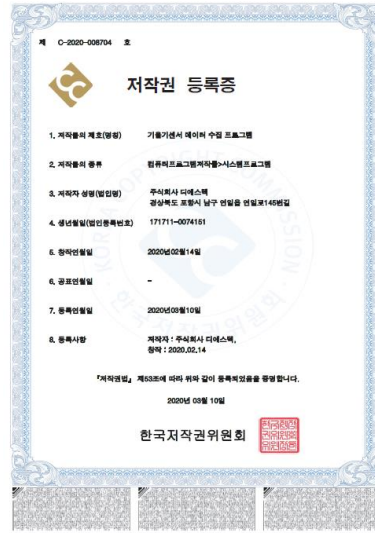
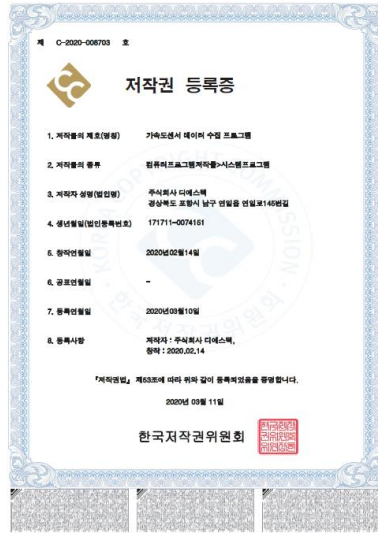
중소벤처기업부장













## Head Office

Address : 72, Yeonil-ro 145beon-gil, Yeonil-eup, Nam-gu, Gyeongsangbuk-do, Korea.

TEL. 054-272-7433

FAX. 054-272-7435

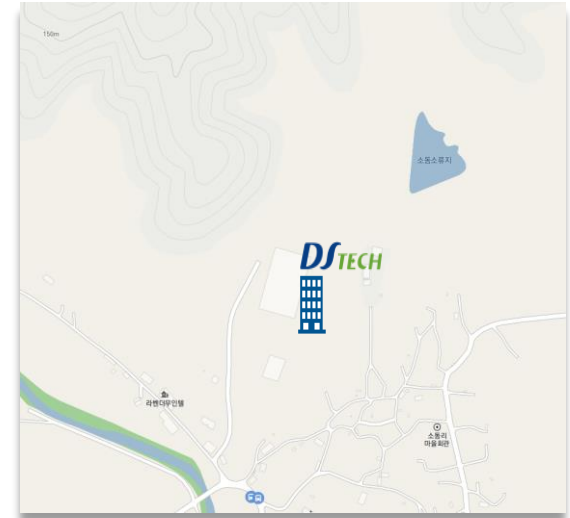


## Seoul Branch

Address : 707. 65, Digital-ro 9-gil, Geumcheon-gu, Seoul, Korea.

TEL. 02-884-7433

FAX. 02-884-7422



## Pohang Factory

127-16 Sabang Park-gil, Cheong-myeon, Pohang-si, Korea.

TEL. 054-241-7433

FAX. 054-241-7435

***DS*TECH DSTECH Co., Ltd.**